



Project Update 10th January 2019

The Hillside Mews, Llandudno Junction

Exterior works have started today in preparation for the block paved driveways. All the internal painting has now been carried out ready for the first customer to move in at the end of the month.



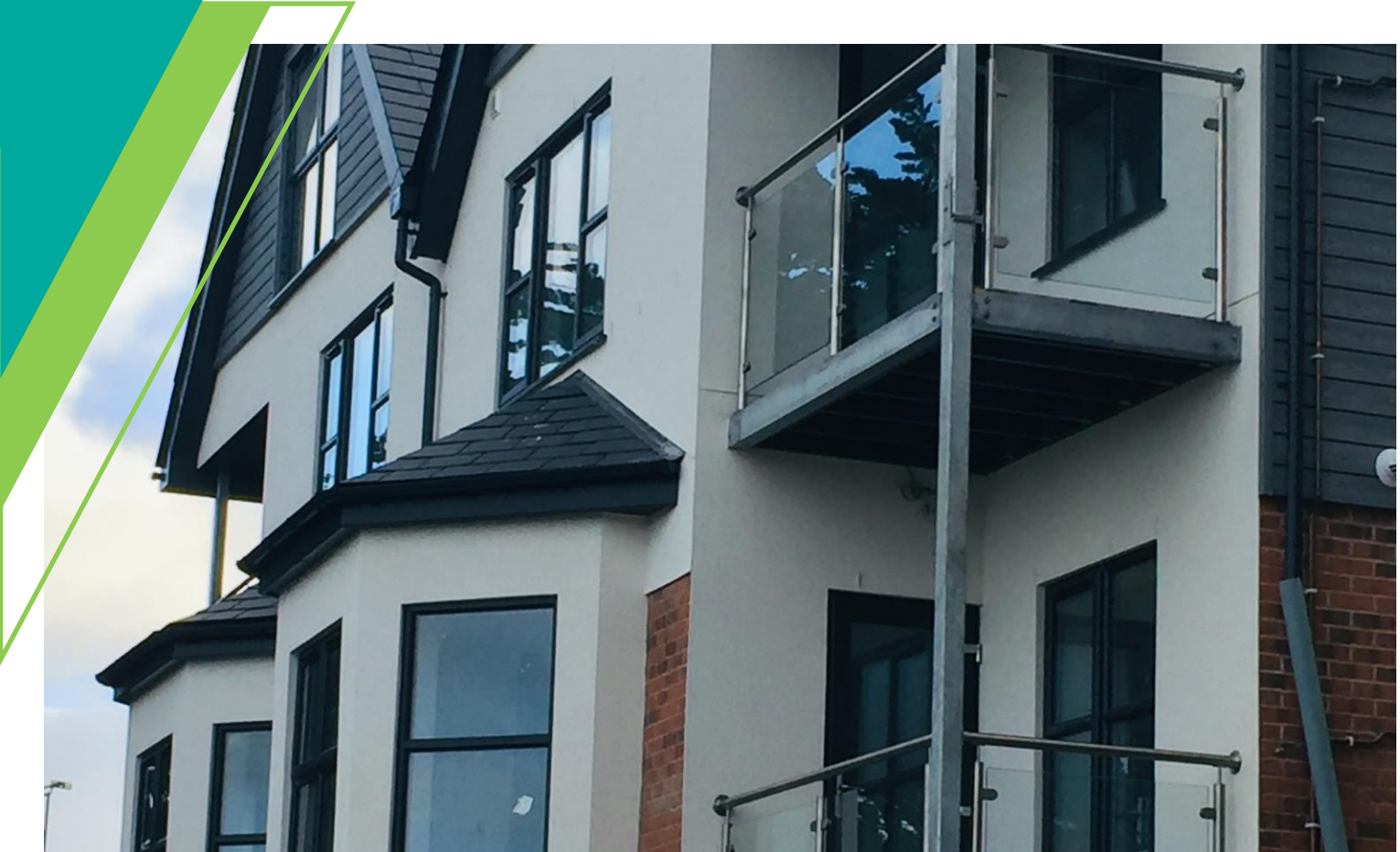


College Avenue, Rhos on Sea

The roof tiling is underway, with stud partitions being installed on every floor. First fix electrical work is also being carried out this month and all windows and doors have been fitted.

Please see additional photo montage for more updates.





Cedar Court, Victoria Park, Colwyn Bay

Exterior works are well underway with the car park walls nearing completion. The preparation for the main car park has also started, with block paving being laid within the next two weeks. You will notice from the picture that the chrome and glass balconies have been installed on the front elevation of both blocks. The lifts have also been installed and communal areas painted and handrails fixed.

